



CASE STUDY: ABPATHFINDER

BETTER TOOLS BETTER OUTCOMES

WHO IS ABPATHFINDER, LLC

ABPathfinder develops special education and therapy management solutions that increase the efficiency and effectiveness of special education and autism therapy programs. The cloud-based platform provides tools which aid therapists and para professionals to build treatment plans, log data and track progress for multiple students simultaneously. In return educators can maximize their time and effort to invest in each child with special needs and autism.

ABathfinder is a Microsoft Azure based cloud application. It runs on multiple servers, serving health professional that rely on ABPathfinder uptime using it on variety of devices. To properly service its customers - health professionals, ABPathfinder platform need to provide high availability, always synchronized data, and compliance with variety of requirements including HIPPA compliance.

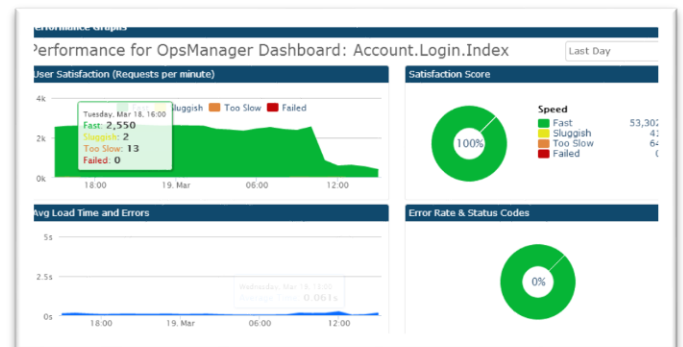
“Within an hour of installing Stackify we were able to find a service that was not only not performing but was causing such server contention, that it was causing issues for people who were not even using that service”
CTO, ABPathfinder

ENSURE HIGH AVAILABILITY

To assure uptime and performance, ABPathfinder uses Stackify to help monitor their production environment.

The Application Dashboard helps them understand their customer experience and the overall application health.

“In our NOC we constantly monitor variety of parameters including client performance, individual web page performance, throughput, latency, server performance and most importantly customer satisfaction which helps us aggregate all the data end-to-end from the customers perspective, with a lot of factors that roll up into that.” Said Kelly Kerns CTO, ABPathfinder. “What we like in Stackify that is that it’s not just giving you a lot of data that you need to make sense of, but rather gives us the most important info we currently need to help us fix issues before our customers event notice them”



STACKIFY ALLOWS US TO PROACTIVELY PINPOINT ISSUES FAST AND EFFICIENTLY

Using Stackify, ABPathfinder's support and development teams are getting the relevant data and insight onto their application behavior and allow them to be proactive and identify if there anything that is not working as designed - ensuring that the treatment of a child with autism is not affected.

The ABPathfinder solution has an API framework that is based on RESTful methodology, allowing them to look at individual API calls as well as unique URLs and identify quite easily using Stackify if one of them is not performing properly

VALUE OUT OF THE BOX

Stackify's solution is pre-configured with customized Smart Defaults allowing customers to get immediate indications on their application performance and indication of any underlying issues hurting their application performance or behavior.

"Within an hour of installing Stackify we were able to find a service that was not only not performing but was causing such server contention, that it was causing issues for people who were not even using that service"

STACKIFY KEY BENEFITS

Key Benefits

- All the tools you need to monitor your app health in one platform
- Automatically finds all apps on different servers and creates monitors
- Easy to install with smart defaults providing immediate out-of-the-box value
- Seamlessly scale up and down your environment
- Monitor webpage level performance and user satisfaction
- Option for secured configurable read-only access to any set of files on the server for faster diagnostics

Monitoring

- App monitoring
- Server Monitoring
- DB & query monitoring
- Website monitoring
- Queue monitoring
- Auto-discovery of new apps

Alerts

- Comprehensive App Status Alerts
- Email & SMS
- Escalation rules

Errors

- Collect and report all app errors
- Alerts, trends and reporting

Log Files

- Tail and search app & IIS logs
- Windows event viewer

Remote Access

- Access server logs, files, configurations
- Restart apps
- Mask sensitive data in files

Security

- Role based access
- Audit & history

App Metrics

- Monitor performance counters
- Custom Metrics via API
- Monitor JVM mBeans

Application Performance

- Track web page performance
- Utilizing custom metrics to track performance of anything